

Insite Pacific Inc, an internationally recognized leader in underwater video, is proud to introduce the **Helios 11k**, a full ocean depth LED underwater light.

The **Helios 11k** has a truly impressive light output of 11,680 lumens. It can be powered either by AC or DC with flicker free dimming control.

Light intensity can be controlled via DC voltages or through either an RS232 or RS485 serial link using Insite Pacific’s Helios LED Driver software (GUI). Settings such as a Light Name, Light Number, Dimming Speed, and % Light Output can be saved. The saved settings will be retained when the light is turned off and will reload when the light is turned on.

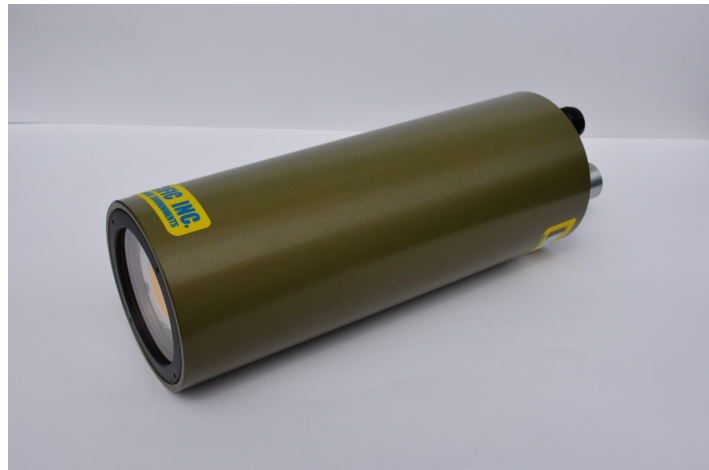
The Insite Pacific Helios LED Driver Software (GUI) can independently control up to 8 lights simultaneously using an RS485 interface.

The **Helios 11k** is supplied with a thermal monitoring electronic control circuit. This circuit turns the light off, when operating in air, should the light reach a maximum preset operating temperature.

The **Helios 11k** offers significantly greater shock and vibration resistance over other conventional lighting systems.

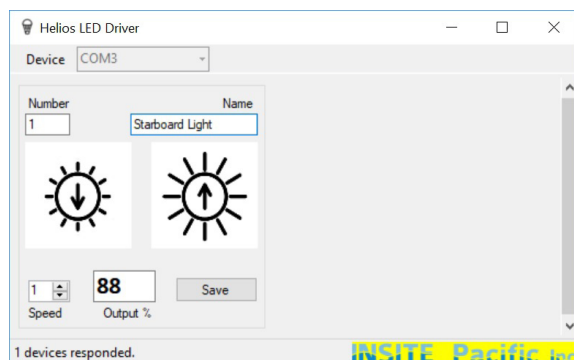
Pressure housings with a depth rating of up to 7,000 meters are available.

Disclaimer: This light MUST NOT be viewed directly with the naked eye when illuminated to avoid the possibility of permanent damage to the eyes.



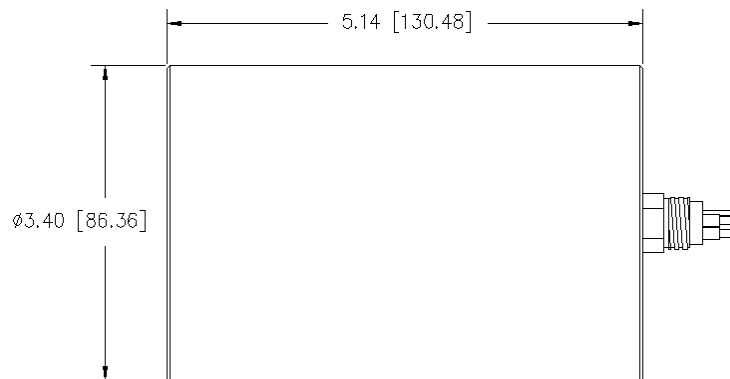
Features

- 11,680 Lumen Light Output (typical)
- A Color Rendition Index (CRI) of 90
- 5600K Color Temperature
- Long Life LED Light Bulb
- AC or DC Voltage Powered
- Fully Field Servicable
- DC Voltage Dimming Control
- RS232 or RS485 Dimming Control



Insite Pacific Inc. - "Helios 11k"

Specifications



Dimensions above shown for 7km depth rated DC powered light.

All measurements in inches [mm]

Electrical

Operating DC Voltage Range	20 - 30VDC
Input Current @ 20VDC Input	5.4A
Input Current @ 24VDC Input	4.3A
Input Current @ 30VDC Input	3.4A

Operating AC Voltage Range	100-264VAC, 47-63Hz
Input Current @ 115VAC Input	1.1A
Input Current @ 220VAC Input	560mA

Dimming Control	0 - 5VDC or 0 - 10VDC Serial RS232 or RS485
-----------------	--

Optical

Typical Luminous Power	11,680 Lumens
Color Temperature	5600K
Color Rendition Index	90
Beam Angle in Water	80 degrees
Lumens Per Watt (AC Powered Light)	95
Lumens Per Watt (DC Powered Light)	114

Mechanical

Weight in Air (7km Housing - DC)	4.0 lb. (1.81 kg)
Weight in Water (7km Housing - DC)	2.5 lb. (1.13kg)
Housing Material	7075-T6 Aluminum & Sapphire
Connector	Customer Specified

Environmental

Depth (as shown)	22,966ft (7,000 meters) (Various depth ratings are available)
Operating Temperature	32°F to 130°F (0°C to 54.4°C)
Storage Temperature	-4°F to 140°F (-20°C to 60°C)

All specifications are subject to change in line with Insite Pacific's policy of continual product development.

Insite Pacific Inc.

6837 Nancy Ridge Drive, Suite G, San Diego, CA 92121, USA
Phone (858) 523-0642 Fax (858) 523-0643
Website: www.insitepacific.com Email: sales@insitepacific.com

Issue June 28, 2021